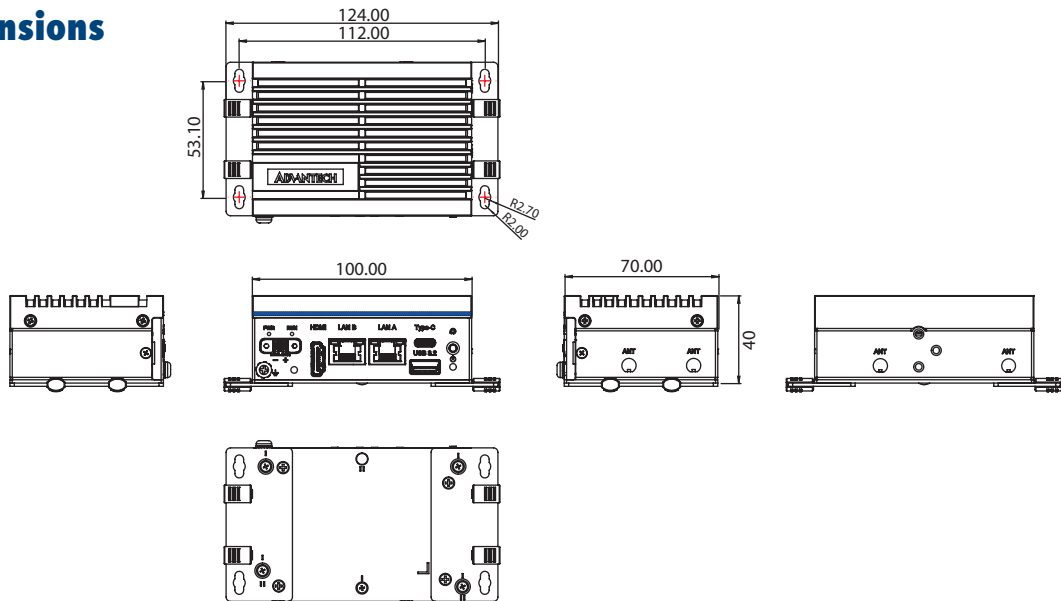


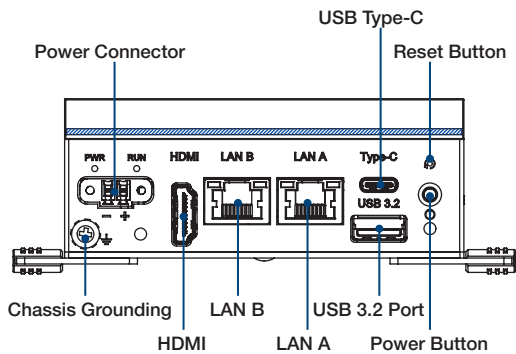


## Dimensions

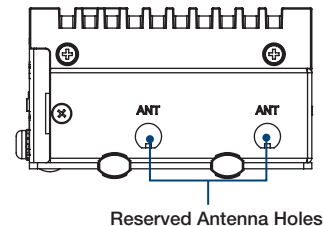


Unit: mm

## Front I/O



## Side I/O



## Ordering Information

- UNO-2271G-I331AE** Intel® Atom® x7211RE 8 GB Ram, 64 GB eMMC, 2 x GbE, 1 x USB3.2, 1 x USB Type-C, 1 x HDMI, 1 x M.2 Bkey
- UNO-2271G-I331AU** Intel® Atom® x7211RE 8 GB Ram, 64 GB eMMC, 2 x GbE, 1 x USB3.2, 1 x USB Type-C, 1 x HDMI, 1 x M.2 Bkey, US Region

## Embedded OS

- 20701WLE1S0015** WIN11 LTSC v7.01 B024 for UNO-2271G\_V3 Entry
- 20701U22DS0002** AdvLinux 22.04
- 20701U24DS0000** AdvLinux 24.04

## Optional Accessories

### Extension Kits

- UNO-2271G-EKDE** 2nd stack extension kit for iDoor
- UNO-2271G-RP1EB** 2nd stack extension kit for POE PD, COM, M.2 B key
- UNO-2271G-RS2EB** 2nd stack extension kit for 2xCOM, M.2 B+E key

### Adapters and Power Cables

- 96PSA-A60W24T2-3** 60W AC to DC UNO series power adapter
- 1702002600** Power cable (US) 1.8 M
- 1702002605** Power cable (EU) 1.8 M
- 1702031801-11** Power cable (UK) 1.8 M
- 1700000596-11** Power cable (China/Australia) 1.8 M

### Mount Kits

- UNO-100-DMKAE** UNO-2271G V3 DIN-rail mount kit
- UNO-2000G-VMKAE** UNO-2000 VESA mount kit

### Miscellaneous

- UNO-2000-LKAE** Cable lock kit, 10 units per pack
- 9891P383000** M.2 for 2242 B+M to E key convertor
- AIW-166K3** Intel AX210 802.11ax+BT5.2

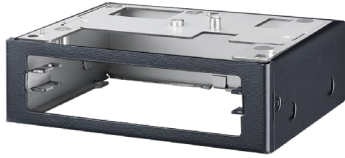
### Thermal Kit

- 98R1U227100** Thermal kit for second stack with M.2 B key
- 98R1U227101** Thermal Kit for M.2 B to E key
- 98R1U227102** Thermal Kit for M.2 B key

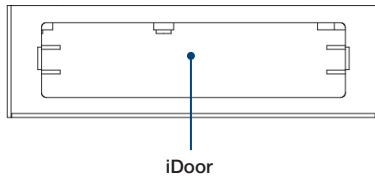
# Extension Kits

## UNO-2271G-EKDE

Second stack extension kit for iDoor technology



### Front I/O



### Specifications

General	
I/O	1 x iDoor slot (chassis only)
Dimensions	100 x 70 x 30 mm/ 3.93 x 2.75 x 1.18 in
Weight	100 g/0.22 lb
Environment	
Operating Temperature	Dependent on iDoor module installed

### Ordering Information

Part Number	Description
UNO-2271G-EKDE	UNO-2271G V3 2nd stack extension kit for iDoor

### Optional iDoor Modules\*

Part Number	Description
PCM-34D2R4-AE	2-port isolated RS-422/485, M.2 B key (2242, USB 2.0), DB9
PCM-34D2R2-AE	2-port isolated RS-232, M.2 B key (2242, USB 2.0), DB9
PCM-34D4R4-AE	4-port non-isolated RS-422/485, M.2 B key (2242, USB 2.0), DB37 cable
PCM-34D4R2-AE	4-port non-isolated RS-232, M.2 B key (2242, USB 2.0), DB37 cable
PCM-34R1TP-AE	1-port Gigabit Ethernet, Intel® i225, M.2 B+M key (3042 ,PCIe*1), RJ45
PCM-34R2GL-AE	2-port Gigabit Ethernet, Intel® i350, M.2 B+M key (2242, PCIe*1), RJ45
PCM-37D24DI-AE	24-channel isolated digital I/O, M.2 B+M key (3042, PCIe*1), DB37

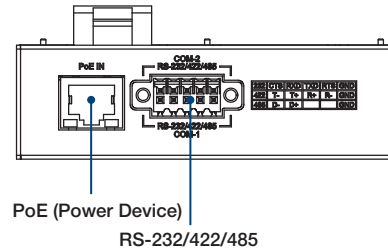
\*Contact Advantech for more compatible iDoor solutions.

## UNO-2271G-RP1EB

Second stack module with 2 x COM, 1 x PoE (PD), 1 x M.2 (B key)



### Front I/O



### Specifications

General	
I/O	2 x COM (RS-232/422/485) terminal block 1 x PoE+ (802.3at) (power device) Note: Because PoE can only provide 25.5W max. power, USB ports should only be used to connect USB 2.0 devices.
Expansion	1 x M.2 (B key) (SATA/USB 3.0 signals for LTE)
SIM Slot	1 x nano SIM slot
Dimensions	100 x 70 x 30 mm/ 3.93 x 2.75 x 1.18 in
Weight	120 g/0.26 lb
Environment	
Operating Temperature	-20 ~ 60 °C/-4 ~ 140 °F

### Ordering Information

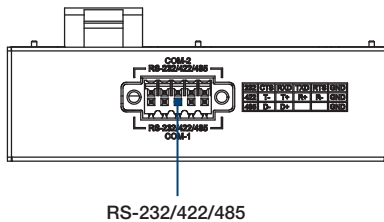
Part Number	Description
UNO-2271G-RP1EB	UNO-2271G V3 second stack module with 2 x COM, 1 x PoE, 1 x M.2 (B key)

## UNO-2271G-RS2EB

Second stack module with 2 x COM,  
1 x M.2 (B key), 1 x M.2 (E key)



### Front I/O



### Specifications

General	
I/O	2 x COM (RS-232/422/485) terminal block
Expansion	1 x M.2 (B key) (SATA/USB 3.0 signals for LTE) 1 x M.2 (E key) (PCIe/USB 2.0 signals for Wi-Fi)
Network Connectivity	1 x nano SIM slot
Dimensions	100 x 70 x 30 mm/ 3.93 x 2.75 x 1.18 in
Weight	120 g/0.26 lb
Environment	
Operating Temperature	-20 ~ 60 °C/-4 ~ 140 °F

### Ordering Information

Part Number	Description
UNO-2271G-RS2EB	UNO-2271G V3 second stack module with 2 x COM, 2 x M.2 (B+E key)